

# ALT950

TELESCOPIC ARTICULATED LOADER

**GEHL**®



## KEY FEATURES

- ✓ CVT Transmission
- ✓ Multi-Function Joystick
- ✓ Improved Visibility
- ✓ 2D Articulation
- ✓ Rear Axle Oscillation
- ✓ Spacious Cabin
- ✓ Air-Conditioned Cab\*
- ✓ 143 hp Deutz Engine
- ✓ 158 L/min. Hydraulic Flow
- ✓ Hydraulic Locking System Attachment Mount
- ✓ Continuous Flow
- ✓ ECO Mode

\*Optional features

# ALT950 TELESCOPIC ARTICULATED LOADER

## SPECIFICATIONS

	METRIC	IMPERIAL	
<b>DIMENSIONS</b>	Height to Top of Cab / ROPS	2.7 m	8' 10"
	Width over Tires	2.29 m	7' 6"
	Length to Carriage	5.72 m	18' 9"
	Maximum Lifting Height (below forks)	5.2 m	17' 0"
	Maximum Dump Angle at Full Height	156°	
	Outer Turning Radius	4.2 m	13' 9"
	Articulation Angle from Center	44°	
<b>LOAD CAPACITIES</b>	Static Tipping Load with Forks Straight	4978 kg	10,974 lbs
	Static Tipping Load with Forks Full Turn	4147 kg	9,142 lbs
	Bucket Breakout	6730 daN	15,129 lbf
	Operating Weight with Bucket	8490 kg	18,717 lbs
<b>ENGINE</b>	Engine Manufacturer	Deutz / Stage V	
	Model / Number of Cylinders	TCD 4.1 L4 / 4	
	Gross Power @ 2300 rpm	105 kW	143 hp
	Displacement	4083 cm <sup>3</sup>	1607 in <sup>3</sup>
<b>HYDRAULICS</b>	Work Hydraulic System Flow	158 L/min	42 gal/min
	Drive Hydraulic System Pressure	270 bar	3000 psi
	Drive Hydraulic Reservoir Capacity	150 L	40 gal
<b>OTHER</b>	Travel Speed	40 kph	25 mph
	Fuel Tank Capacity	150 L	40 gal.
	Tires	460 / 70 R24 159A8 A580 - Alliance	

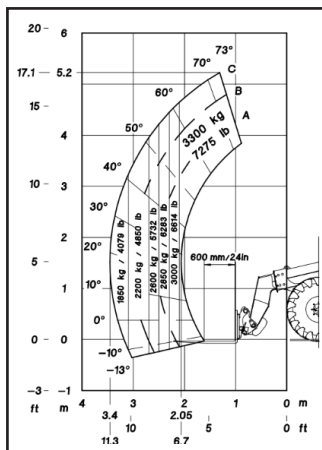


## STANDARD FEATURES

- Cabin with heat
- Proportional Auxiliary Hydraulics with Circuit Pressure Dump
- CVT Transmission (40Kph)
- Inching Pedal
- Electronic Hand Throttle
- Digital Display with Audible and Visual Indicators
- Steering Column with Tilt and Extension Adjustments
- Differential Lock
- Oscillating Rear Axle
- Rubber floor mat
- Adjustable Arm Rest
- Seven-Way Adjustable Seat
- 12-Volt Socket/USB-plug near arm rest
- Telescopic Lift Arm with Z-Bar Bucket Linkage
- Multi-Function Joystick
- Lift/Tilt Electronic Lockout Switch
- Articulation Locking Bar (conforms to SAEJ276)
- Horn
- Side View Mirrors
- Front, Rear & Boom Worklights
- Road Lights
- ECO-Mode
- Radio
- Continuous Flow Hydraulics
- Storage Boxes
- Speed Control
- Rotating Beacon
- License Plate Holder

## OPTIONAL FEATURES

- Cabin with Heat and Air Conditioning
- LED Work Lights
- Back-up Alarm
- Active Comfort Ride Control (Boom Suspension)
- Rear Auxiliary Hydraulics
- Radio (Bluetooth Hands-Free)
- Engine Block Heater
- Regenerative Hydraulics
- Electric Mirrors with de-icing
- Hydraulic Pick-Up Hitch
- Tire Options
- Auto-Reversing Fan
- Eco Stop



GEHL COMPACT EQUIPMENT

West Bend, WI 53095 U.S.A. | Tel: 262-334-9461 | Fax: 262-338-7517

Gehl Company reminds users to read and understand the operator's manual before operating any equipment. Also, make sure all safety devices and shields are in place and functioning properly.

Gehl reserves the right to add improvements or make changes in specifications at any time without notice or obligation.